

RIGHT ANGLED SEAT VALVE
SERIES NRT NC, NO, DA
COMPLETE OR ACTUATOR ONLY

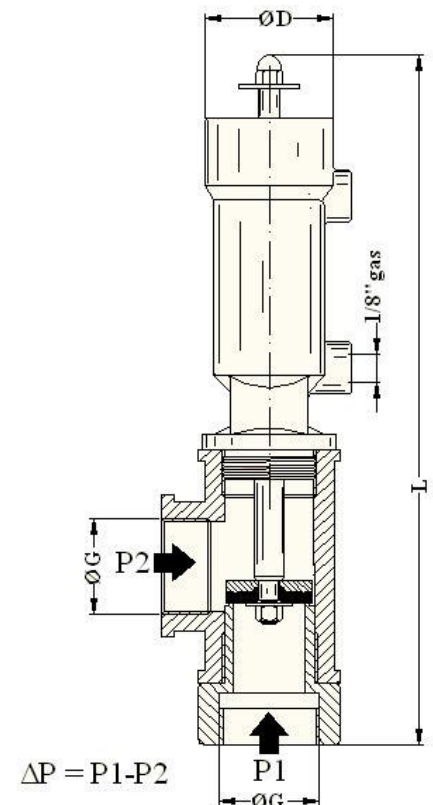
TECHNICAL FEATURES

- SHUTTER: FLAT SEAL
- FLOW LINE: DEFLECTED OF 90°
- ACTUATOR: SINGLE ACTING CYLINDER WITH SPRING RETURN (NC/NO) OR DOUBLE ACTING CYLINDER (DA)
- PILOT PRESSURE: MIN 5 BAR - MAX 8 BAR
- AMBIENT TEMPERATURE: FROM 0°C TO 60°C
- CYLINDER BORE: 30, 33 MM
- MAX FLUID TEMPERATURE: 80° C
- EQUIPPED WITH STEM FOR VISUAL INDICATION OF OPEN / CLOSED POSITION



MAIN MATERIALS

- CYLINDER: HEAT-STABILIZED NYLON 66
- PISTON: ALUMINUM ALLOY
- PISTON ROD: STAINLESS STEEL AISI 304
- SEAL HOLDER: BRASS
- SEAL: FKM
- VALVE BODY (PN16): BRASS



O-RING IN CONTACT WITH FLUID IN FKM

SIZE							MAX ΔP (bar)						
CODE	G ("GAS)	FUNCTION	A	L (max)	D	CYL. BORE	NC FUNCTION	PILOT PRESSURE [bar] NA/DA FUNCTION					
								4.0	5.0	5.5	6.0	7.0	8.0
151012	1/2"	NC	-	209	41.5	30	12.0	-	-	-	-	-	-
151034	3/4"	NC	-	214	41.5	30	7.2	-	-	-	-	-	-
151100	1"	NC	-	224	41.5	30	4.2	-	-	-	-	-	-
151114	1" 1/4	NC	-	237	41.5	30	2.2	-	-	-	-	-	-
151112	1" 1/2	NC	-	254	46.5	33	2.1	-	-	-	-	-	-
151200	2"	NC	-	270	46.5	33	1.5	-	-	-	-	-	-
152012	1/2"	NO	-	224	41.5	30	-	3.8	6.9	11.3	12.0	15.1	≤16.0
152034	3/4"	NO	-	229	41.5	30	-	2.5	4.2	5.8	7.1	9.1	10.2
152100	1"	NO	-	239	41.5	30	-	1.9	3.1	3.8	4.8	5.9	7.3
152114	1" 1/4	NO	-	252	41.5	30	-	1.5	2.2	2.7	3.1	3.8	4.2
152112	1" 1/2	NO	-	269	46.5	33	-	0.3	0.8	1.5	1.6	2.0	2.5
152200	2"	NO	-	285	46.5	33	-	0.2	0.6	1.0	1.1	1.5	1.8
153012	1/2"	DA	-	224	41.5	30	-	14.4	≤16.0	≤16.0	≤16.0	≤16.0	≤16.0
153034	3/4"	DA	-	229	41.5	30	-	8.0	9.2	10.4	12.6	14.9	≤16.0
153100	1"	DA	-	239	41.5	30	-	5.6	6.5	7.6	8.3	9.8	12.1
153114	1" 1/4	DA	-	252	41.5	30	-	3.0	3.5	3.8	4.1	4.8	5.6
153112	1" 1/2	DA	-	269	46.5	33	-	2.8	3.3	3.6	4.0	4.5	5.3
153200	2"	DA	-	285	46.5	33	-	1.6	1.9	2.1	2.3	2.9	3.4

RIGHT ANGLED SEAT VALVE
SERIES AKT NC, NO, DA
COMPLETE OR ACTUATOR ONLY

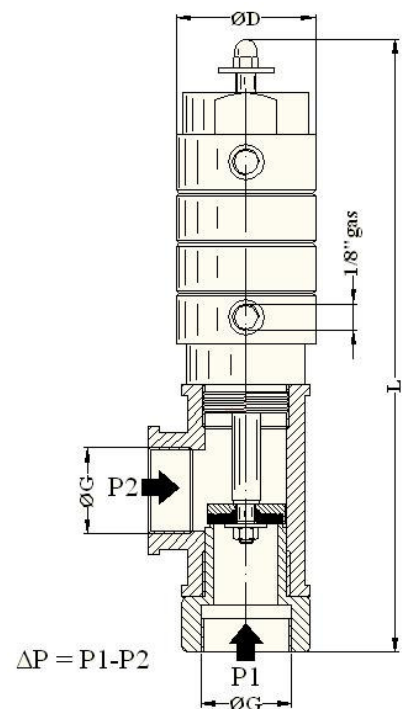
TECHNICAL FEATURES

- SHUTTER: FLAT SEAL
- FLOW LINE: DEFLECTED OF 90°
- ACTUATOR: SINGLE ACTING CYLINDER WITH SPRING RETURN (NC/NO) OR DOUBLE ACTING CYLINDER (DA)
- PILOT PRESSURE: MIN 5 BAR - MAX 10 BAR
- AMBIENT TEMPERATURE: FROM -20°C TO 60°C
- CYLINDER BORE: 30, 48 MM
- MAX FLUID TEMPERATURE: 100° C
- EQUIPPED WITH STEM FOR VISUAL INDICATION OF OPEN/CLOSED POSITION



MAIN MATERIALS

- CYLINDER: ANODIZED ALUMINUM ALLOY
- PISTON: ALUMINUM ALLOY
- PISTON ROD: STAINLESS STEEL AISI 304
- SEAL HOLDER: BRASS
- SEAL: FKM
- VALVE BODY (PN16): BRASS



O-RING IN CONTACT WITH FLUID IN FKM

SIZES							MAX ΔP (bar)						
CODE	G ("GAS)	FUNCTION	A	L (max)	D	CYLINDER BORE	NC FUNCTION	PILOT PRESSURE [bar] NA/DA FUNCTION					
								4.0	5.0	5.5	6.0	7.0	8.0
11012T	1/2"	NC	-	206	50	30	13.5	-	-	-	-	-	-
11034T	3/4"	NC	-	211	50	30	8.1	-	-	-	-	-	-
11100T	1"	NC	-	221	50	30	4.1	-	-	-	-	-	-
11114T	1" 1/4	NC	-	234	50	30	2.4	-	-	-	-	-	-
11112T	1" 1/2	NC	-	251	60	48	3.5	-	-	-	-	-	-
11200T	2"	NC	-	267	60	48	2.0	-	-	-	-	-	-
12012T	1/2"	NO	-	221	50	30	-	5.5	8.9	10.2	13.8	≤16.0	≤16.0
12034T	3/4"	NO	-	226	50	30	-	3.6	4.9	5.3	8.0	9.6	11.5
12100T	1"	NO	-	236	50	30	-	2.3	3.6	4.1	5.2	6.6	8.2
12114T	1" 1/4	NO	-	249	50	30	-	1.3	2.0	2.4	2.8	3.5	4.2
12112T	1" 1/2	NO	-	266	60	48	-	3.6	5.0	5.7	6.4	8.0	9.5
12200T	2"	NO	-	282	60	48	-	2.0	3.1	3.6	4.0	5.2	6.4
13012T	1/2"	DA	-	221	50	30	-	14.5	≤16.0	≤16.0	≤16.0	≤16.0	≤16.0
13034T	3/4"	DA	-	226	50	30	-	9.3	12.2	13.0	13.7	15.5	≤16.0
13100T	1"	DA	-	236	50	30	-	5.8	7.0	7.9	8.8	10.4	12.1
13114T	1" 1/4	DA	-	249	50	30	-	3.2	3.7	4.2	4.6	5.2	6.0
13112T	1" 1/2	DA	-	266	60	48	-	6.3	7.7	8.4	9.5	10.6	13.8
13200T	2"	DA	-	282	60	48	-	4.1	5.0	5.6	6.2	7.3	8.4

RIGHT ANGLED SEAT VALVES
SERIE SELUB T NC, NO, DA
SELF-LUBRICATED
COMPLETE OR ACTUATOR ONLY

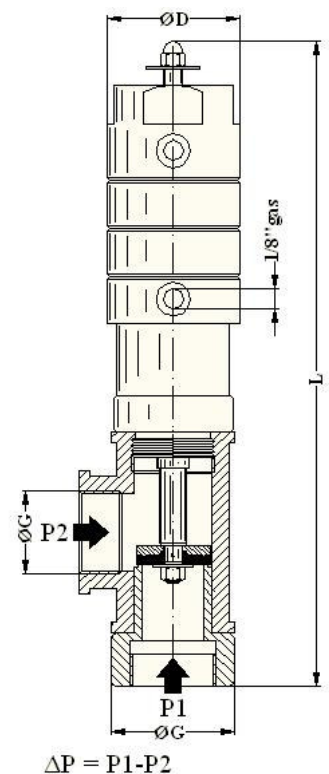
TECHNICAL FEATURES

- SHUTTER: FLAT SEAL
- FLOW LINE: DEFLECTED OF 90°
- ACTUATOR: SINGLE ACTING CYLINDER WITH SPRING RETURN (NC/NO) OR DOUBLE ACTING CYLINDER (DA)
- LUBRICATION: SELF-LUBRICATING ROD GUIDE
- PILOT PRESSURE: MIN 5 BAR - MAX 10 BAR
- AMBIENT TEMPERATURE: FROM -20°C TO 60° C
- CYLINDER BORE: 30, 48 MM
- MAX FLUID TEMPERATURE: 120°C
- EQUIPPED WITH STEM FOR VISUAL INDICATION OF OPEN/CLOSED POSITION

MAIN MATERIALS

- CYLINDER: ANODIZED ALUMINUM ALLOY
- PISTON: ALUMINUM ALLOY
- PISTON ROD: STAINLESS STEEL AISI 304
- EXTENSION ADAPTER: BRASS
- SEAL HOLDER: BRASS
- SEAL: FKM
- ROD WIPER: PTFE
- ROD GUIDE: SPECIAL TECHNO-POLYMER
- VALVE BODY (PN16): BRASS

O-RING IN CONTACT WITH FLUID IN FKM



SIZE							MAX ΔP (bar)						
CODE	G ("GAS)	FUNCTION	A	L (max)	D	CYL. BORE	NC FUNCTION	PILOT PRESSURE [bar] NA/DA FUNCTION					
								4.0	5.0	5.5	6.0	7.0	8.0
91012T	1/2"	NC	-	231	50	30	13.5	-	-	-	-	-	-
91034T	3/4"	NC	-	236	50	30	8.1	-	-	-	-	-	-
91100T	1"	NC	-	246	50	30	4.1	-	-	-	-	-	-
91114T	1" 1/4	NC	-	259	50	30	2.4	-	-	-	-	-	-
91112T	1" 1/2	NC	-	276	60	48	3.5	-	-	-	-	-	-
91200T	2"	NC	-	292	60	48	2.0	-	-	-	-	-	-
92012T	1/2"	NO	-	246	50	30	-	5.5	8.9	10.2	13.8	≤16.0	≤16.0
92034T	3/4"	NO	-	251	50	30	-	3.6	5.3	4.9	8.0	9.6	11.5
92100T	1"	NO	-	261	50	30	-	2.3	3.6	4.1	5.2	6.6	8.2
92114T	1" 1/4	NO	-	274	50	30	-	1.3	2.0	2.4	2.8	3.5	4.2
92112T	1" 1/2	NO	-	291	60	48	-	3.6	5.0	5.7	6.4	8.0	9.5
92200T	2"	NO	-	307	60	48	-	2.0	3.1	3.6	4.0	5.2	6.4
93012T	1/2"	DA	-	246	50	30	-	14.5	≤16.0	≤16.0	≤16.0	≤16.0	≤16.0
93034T	3/4"	DA	-	251	50	30	-	9.3	12.2	13.0	13.7	15.5	≤16.0
93100T	1"	DA	-	261	50	30	-	5.8	7.0	7.9	8.8	10.4	12.1
93114T	1" 1/4	DA	-	274	50	30	-	3.2	3.7	4.2	4.6	5.2	6.0
93112T	1" 1/2	DA	-	291	60	48	-	6.3	7.7	8.4	9.5	10.6	13.8
93200T	2"	DA	-	307	60	48	-	4.1	5.0	5.6	6.2	7.3	8.4

RIGHT ANGLED SEAT VALVE
SERIES NYL-SAP NC, NO, DA
LUBRICATED
COMPLETE OR ACTUATOR ONLY

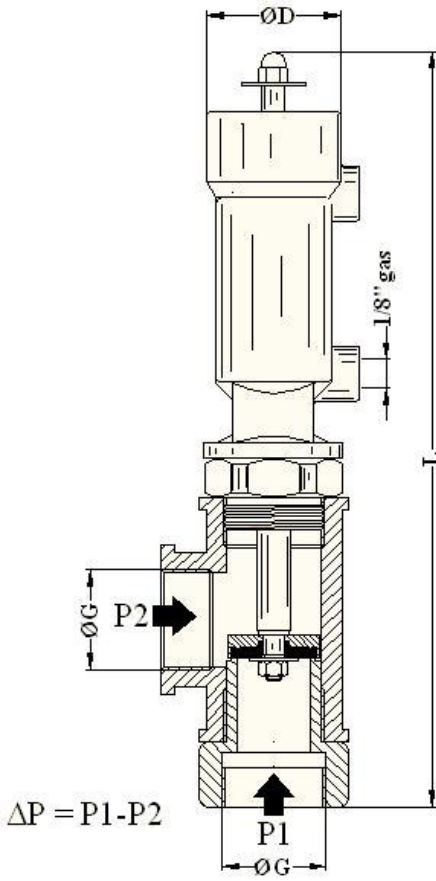
TECHNICAL FEATURES

- SHUTTER: FLAT SEAL
- FLOW LINE: DEFLECTED OF 90°
- ACTUATOR: SINGLE ACTING CYLINDER WITH SPRING RETURN (NC/NO) OR DOUBLE ACTING CYLINDER (DA)
- LUBRICATION: LUBRICATING OIL
- PILOT PRESSURE: MIN 5 BAR - MAX 8 BAR
- AMBIENT TEMPERATURE: FROM 0°C TO 60°C
- CYLINDER BORE: 30 MM
- MAX FLUID TEMPERATURE: 100° C
- EQUIPPED WITH STEM FOR VISUAL INDICATION OF OPEN / CLOSED POSITION

MAIN MATERIALS

- CYLINDER: HEAT-STABILIZED NYLON 66
- PISTON: ALUMINUM ALLOY
- PISTON ROD: STAINLESS STEEL AISI 304
- EXTENSION ADAPTER FILLED WITH LUBRICATING OIL: BRASS
- SEAL HOLDER: BRASS
- SEAL: FKM
- VALVE BODY (PN16): BRASS
- FITTING WITH SEAT VALVE: BRASS

O-RING IN CONTACT WITH FLUID IN FKM



SIZE							MAX ΔP (bar)						
CODE	G ("GAS)	FUNCTION	A	L (max)	D	CYL. BORE	NC FUNCTION	PILOT PRESSURE [bar] NO/DA FUNCTION					
								4.0	5.0	5.5	6.0	7.0	8.0
S141034T	3/4"	NC	-	235	41.5	30	7.1	-	-	-	-	-	-
S141100T	1"	NC	-	241	41.5	30	4.1	-	-	-	-	-	-
S142034T	3/4"	NO	-	241	41.5	30	-	1.8	3.9	5.8	7.1	8.3	10.0
S142100T	1"	NO	-	257	41.5	30	-	1.6	2.5	3.8	4.8	5.2	7.0
S143034T	3/4"	DA	-	241	41.5	30	-	7.5	10.2	11.6	12.5	14.9	≤ 16.0
S143100T	1"	DA	-	257	41.5	30	-	5.5	6.8	7.5	8.5	9.7	10.6

NEEDLE VALVE

SERIES NYL-LO 30 NC, NO, DA

TECHNICAL FEATURES

- SHUTTER: OGIVE-SHAPED PLUG Ø12 mm
- FLOW LINE: DEFLECTED OF 90°
- ACTUATOR: SINGLE ACTING CYLINDER WITH SPRING RETURN (NC/NO) OR DOUBLE ACTING CYLINDER (DA)
- PILOT PRESSURE: MIN 5 BAR - MAX 8 BAR
- AMBIENT TEMPERATURE: FROM 0°C TO 60° C
- CYLINDER BORE: 30 mm
- MAX FLUID TEMPERATURE: 80°C
- SEAT VALVE DIAMETER: 10 MM
- EQUIPPED WITH STEM FOR VISUAL INDICATION OF OPEN / CLOSED POSITION

MAIN MATERIALS

- CYLINDER: HEAT-STABILIZED NYLON 66
- PISTON: ALUMINUM ALLOY
- PISTON ROD: STAINLESS STEEL AISI 304
- SHUTTER: BRASS
- SEAL: FKM
- VALVE BODY: BRASS

O-RING IN CONTACT WITH FLUID IN FKM

HIGH FLOW VALVE

SERIES INCA - DA

SELF-LUBRICATED

INTERCEPTING VALVE FOR HIGH FLOWRATE

TECHNICAL FEATURES

- SHUTTER: FLAT SEAL
- FLOW LINE: DEFLECTED OF 90°
- ACTUATOR: DOUBLE ACTING CYLINDER (DA)
- LUBRICATION: SELF-LUBRICATING ROD GUIDE
- PILOT PRESSURE: MIN 5 BAR - MAX 8 BAR
- AMBIENT TEMPERATURE: FROM 0° C TO 60°C
- CYLINDER BORE: 50, 60 M
- MAX FLUID TEMPERATURE: 100°C

MAIN MATERIALS

- CYLINDER: ANODIZED ALUMINUM ALLOY
- PISTON: ALUMINUM ALLOY
- PISTON ROD: STAINLESS STEEL AISI 304
- SEAL HOLDER: ALUMINUM
- SEAL: FKM FOR SIZE FROM 1”1/4 TO 2” ; NBR FOR 3”
- ROD GUIDE: SPECIAL TECHNOPOLYMER
- ROD WIPER: PTFE
- VALVE BODY : BRONZE

